

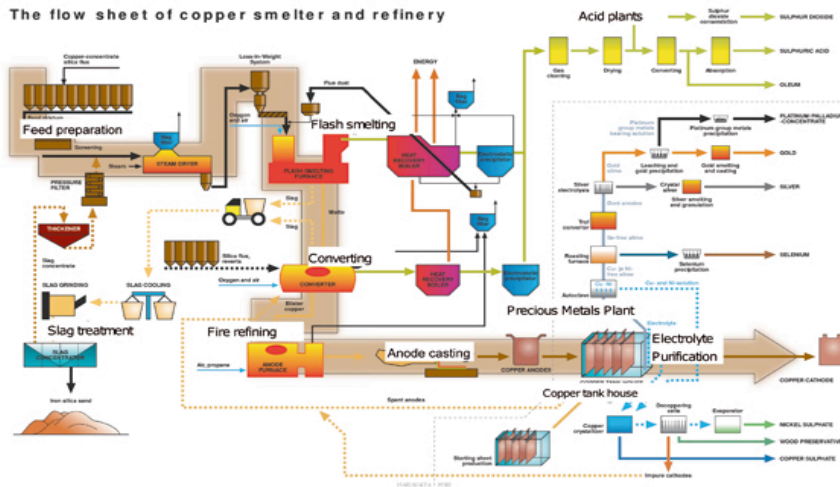
Copper Smelting Refinery

Project:	Control Scheme Modification
Location:	Pori, Finland
System/Technology:	Siemens Simadyn-D
Purchaser:	New Boliden
Purchase Value:	< \$50,000

REFERENCE



NEW BOLIDEN



Scope of Work from Nicklas & Partner

New Boliden is one of the leading mining and smelting companies in the world with operations in Sweden, Finland, Norway and Ireland. Boliden's main products are copper, zinc, lead, gold and silver. The number of employees is approximately 4,500 and the sales are approximately EUR 2 billion annually. The company is a strong European player with a significant global market position.

Nicklas & Partner made control scheme modifications on four Siemens rectifiers used on the copper electrolysis line at the New Boliden Copper Refinery in Pori, Finland. The

rectifiers were rated at 240 volts and 26,000 amps. The project was completed in six days with less than two hours of total down time.

Nicklas & Partner's work allowed New Boliden to increase copper production at the refinery by 2,400 tons per year.